

PROPOSED RESIDENTIAL COMPLEX OF 3 NOS (G+XX)
 BUILDINGS & TWO (G+XX) BUILDING & CLUB HOUSE
 CLUB BUILDING (G+1) AT 2, KONA EXPRESSWAY,
 WARD NO-48 BOUGH NO-7/JL NO-110
 KURNA, DISTRICT BOGHRA, DISTRICT BOGHRA,
 UNDER HOWRAH MUNICIPAL CORPORATION

GENERAL NOTES
 1. ALL DIMENSIONS ARE IN METERS.
 2. ALL WORK SHALL BE DONE AS PER THE SPECIFICATIONS OF THE HOWRAH MUNICIPAL CORPORATION.
 3. THE CONTRACTOR SHALL BE RESPONSIBLE FOR THE PROTECTION OF ALL UTILITIES AND SERVICES UNDER THE GROUND.
 4. ALL WORK SHALL BE DONE AS PER THE SPECIFICATIONS OF THE HOWRAH MUNICIPAL CORPORATION.

SCHEDULE OF WINDOWS	
NO.	DESCRIPTION
01	2.15 x 2.15
02	2.15 x 2.15
03	2.15 x 2.15
04	2.15 x 2.15
05	2.15 x 2.15
06	2.15 x 2.15
07	2.15 x 2.15
08	2.15 x 2.15
09	2.15 x 2.15
10	2.15 x 2.15
11	2.15 x 2.15
12	2.15 x 2.15
13	2.15 x 2.15
14	2.15 x 2.15
15	2.15 x 2.15
16	2.15 x 2.15
17	2.15 x 2.15
18	2.15 x 2.15
19	2.15 x 2.15
20	2.15 x 2.15
21	2.15 x 2.15
22	2.15 x 2.15
23	2.15 x 2.15
24	2.15 x 2.15
25	2.15 x 2.15
26	2.15 x 2.15
27	2.15 x 2.15
28	2.15 x 2.15
29	2.15 x 2.15
30	2.15 x 2.15
31	2.15 x 2.15
32	2.15 x 2.15
33	2.15 x 2.15
34	2.15 x 2.15
35	2.15 x 2.15
36	2.15 x 2.15
37	2.15 x 2.15
38	2.15 x 2.15
39	2.15 x 2.15
40	2.15 x 2.15
41	2.15 x 2.15
42	2.15 x 2.15
43	2.15 x 2.15
44	2.15 x 2.15
45	2.15 x 2.15
46	2.15 x 2.15
47	2.15 x 2.15
48	2.15 x 2.15
49	2.15 x 2.15
50	2.15 x 2.15
51	2.15 x 2.15
52	2.15 x 2.15
53	2.15 x 2.15
54	2.15 x 2.15
55	2.15 x 2.15
56	2.15 x 2.15
57	2.15 x 2.15
58	2.15 x 2.15
59	2.15 x 2.15
60	2.15 x 2.15
61	2.15 x 2.15
62	2.15 x 2.15
63	2.15 x 2.15
64	2.15 x 2.15
65	2.15 x 2.15
66	2.15 x 2.15
67	2.15 x 2.15
68	2.15 x 2.15
69	2.15 x 2.15
70	2.15 x 2.15
71	2.15 x 2.15
72	2.15 x 2.15
73	2.15 x 2.15
74	2.15 x 2.15
75	2.15 x 2.15
76	2.15 x 2.15
77	2.15 x 2.15
78	2.15 x 2.15
79	2.15 x 2.15
80	2.15 x 2.15
81	2.15 x 2.15
82	2.15 x 2.15
83	2.15 x 2.15
84	2.15 x 2.15
85	2.15 x 2.15
86	2.15 x 2.15
87	2.15 x 2.15
88	2.15 x 2.15
89	2.15 x 2.15
90	2.15 x 2.15
91	2.15 x 2.15
92	2.15 x 2.15
93	2.15 x 2.15
94	2.15 x 2.15
95	2.15 x 2.15
96	2.15 x 2.15
97	2.15 x 2.15
98	2.15 x 2.15
99	2.15 x 2.15
100	2.15 x 2.15

UNDEVELOPED
 THE CONTRACTOR SHALL BE RESPONSIBLE FOR THE PROTECTION OF ALL UTILITIES AND SERVICES UNDER THE GROUND.
 ALL WORK SHALL BE DONE AS PER THE SPECIFICATIONS OF THE HOWRAH MUNICIPAL CORPORATION.

SIGNATURE OF GEOTECH ENGINEER
 CHANDI PRASAD KHANNA
 REG. NO. 12345
 SIGNATURE OF STRUCTURAL ENGINEER
 CHANDI PRASAD KHANNA
 REG. NO. 12345

SIGNATURE OF ARCHITECT
 CHANDI PRASAD KHANNA
 REG. NO. 12345

SIGNATURE OF OWNER
 CHANDI PRASAD KHANNA
 REG. NO. 12345

SIGNATURE OF CIVIL ENGINEER
 CHANDI PRASAD KHANNA
 REG. NO. 12345

SIGNATURE OF ELECTRICAL ENGINEER
 CHANDI PRASAD KHANNA
 REG. NO. 12345

SIGNATURE OF MECHANICAL ENGINEER
 CHANDI PRASAD KHANNA
 REG. NO. 12345

SIGNATURE OF SANITARY ENGINEER
 CHANDI PRASAD KHANNA
 REG. NO. 12345

SIGNATURE OF PLUMBING ENGINEER
 CHANDI PRASAD KHANNA
 REG. NO. 12345

SIGNATURE OF PAINT ENGINEER
 CHANDI PRASAD KHANNA
 REG. NO. 12345

SIGNATURE OF ROOFING ENGINEER
 CHANDI PRASAD KHANNA
 REG. NO. 12345

SIGNATURE OF FLOORING ENGINEER
 CHANDI PRASAD KHANNA
 REG. NO. 12345

SIGNATURE OF GLAZING ENGINEER
 CHANDI PRASAD KHANNA
 REG. NO. 12345

SIGNATURE OF CURTAIN WALL ENGINEER
 CHANDI PRASAD KHANNA
 REG. NO. 12345

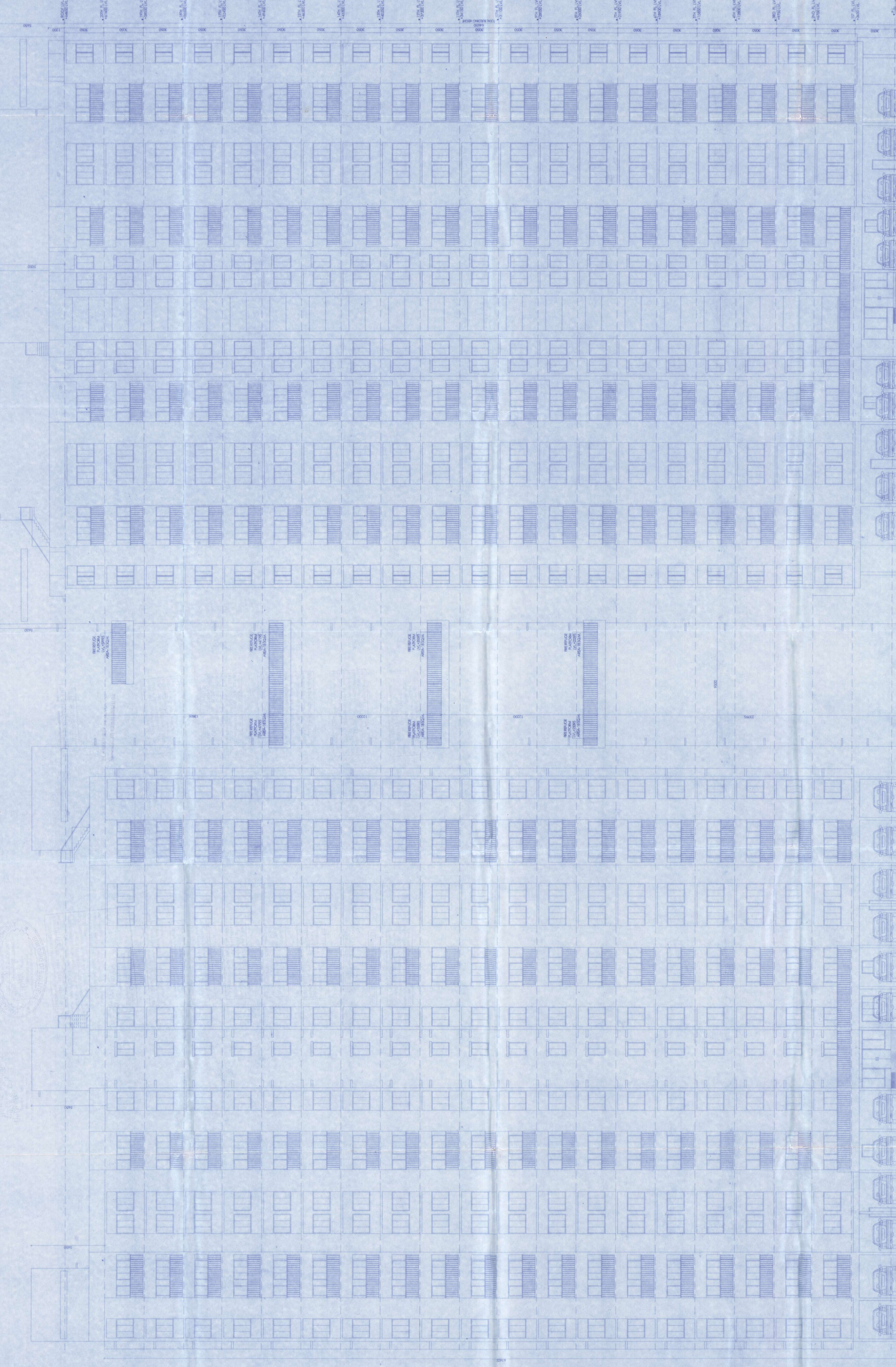
SIGNATURE OF DOOR ENGINEER
 CHANDI PRASAD KHANNA
 REG. NO. 12345

SIGNATURE OF WINDOW ENGINEER
 CHANDI PRASAD KHANNA
 REG. NO. 12345

SIGNATURE OF BALCONY ENGINEER
 CHANDI PRASAD KHANNA
 REG. NO. 12345

SIGNATURE OF TERRACE ENGINEER
 CHANDI PRASAD KHANNA
 REG. NO. 12345

SIGNATURE OF ROOF ENGINEER
 CHANDI PRASAD KHANNA
 REG. NO. 12345



FRONT ELEVATION (TOWER-4)

FRONT ELEVATION (TOWER-3)



CERTIFIED COPY

CORRECTION PLAN
RHC NO. 2000-107
APPROVED BY: [Signature]
Date: 10/16/01
By: [Signature]
Housing Department
Newark Municipal Corporation



Structural drawings and specifications submitted to the Building Department for review and approval shall be in accordance with the Newark Building Code, N.J.A.C. 17:27, and the International Building Code, 2003 Edition, as amended. The Building Department reserves the right to require additional information or to refuse to issue a permit if the drawings and specifications do not conform to the Newark Building Code, N.J.A.C. 17:27, and the International Building Code, 2003 Edition, as amended. The Building Department also reserves the right to require additional information or to refuse to issue a permit if the drawings and specifications do not conform to the Newark Building Code, N.J.A.C. 17:27, and the International Building Code, 2003 Edition, as amended.

Approved subject to the provisions of the Newark Building Code, N.J.A.C. 17:27, and the International Building Code, 2003 Edition, as amended. The Building Department reserves the right to require additional information or to refuse to issue a permit if the drawings and specifications do not conform to the Newark Building Code, N.J.A.C. 17:27, and the International Building Code, 2003 Edition, as amended.

Before starting any construction, the contractor shall file a copy of the approved drawings and specifications with the Building Department. The Building Department reserves the right to require additional information or to refuse to issue a permit if the drawings and specifications do not conform to the Newark Building Code, N.J.A.C. 17:27, and the International Building Code, 2003 Edition, as amended.

The Building Department reserves the right to require additional information or to refuse to issue a permit if the drawings and specifications do not conform to the Newark Building Code, N.J.A.C. 17:27, and the International Building Code, 2003 Edition, as amended.

The Building Department reserves the right to require additional information or to refuse to issue a permit if the drawings and specifications do not conform to the Newark Building Code, N.J.A.C. 17:27, and the International Building Code, 2003 Edition, as amended.

The Building Department reserves the right to require additional information or to refuse to issue a permit if the drawings and specifications do not conform to the Newark Building Code, N.J.A.C. 17:27, and the International Building Code, 2003 Edition, as amended.

The Building Department reserves the right to require additional information or to refuse to issue a permit if the drawings and specifications do not conform to the Newark Building Code, N.J.A.C. 17:27, and the International Building Code, 2003 Edition, as amended.

The Building Department reserves the right to require additional information or to refuse to issue a permit if the drawings and specifications do not conform to the Newark Building Code, N.J.A.C. 17:27, and the International Building Code, 2003 Edition, as amended.

The Building Department reserves the right to require additional information or to refuse to issue a permit if the drawings and specifications do not conform to the Newark Building Code, N.J.A.C. 17:27, and the International Building Code, 2003 Edition, as amended.

The Building Department reserves the right to require additional information or to refuse to issue a permit if the drawings and specifications do not conform to the Newark Building Code, N.J.A.C. 17:27, and the International Building Code, 2003 Edition, as amended.

The Building Department reserves the right to require additional information or to refuse to issue a permit if the drawings and specifications do not conform to the Newark Building Code, N.J.A.C. 17:27, and the International Building Code, 2003 Edition, as amended.

The Building Department reserves the right to require additional information or to refuse to issue a permit if the drawings and specifications do not conform to the Newark Building Code, N.J.A.C. 17:27, and the International Building Code, 2003 Edition, as amended.

The Building Department reserves the right to require additional information or to refuse to issue a permit if the drawings and specifications do not conform to the Newark Building Code, N.J.A.C. 17:27, and the International Building Code, 2003 Edition, as amended.

REMARKS TO BE PRINTED IN CONCORDANCE WITH THE NEWARK BUILDING CODE, N.J.A.C. 17:27, AND THE INTERNATIONAL BUILDING CODE, 2003 EDITION, AS AMENDED.

THE SANCTION IS VALID UP TO 12:00 A.M. ON 10/16/01

APPROVED AS PER SECTION 17:27-2.1 OF THE NEWARK BUILDING CODE, N.J.A.C. 17:27, AND THE INTERNATIONAL BUILDING CODE, 2003 EDITION, AS AMENDED.

PLACED IN MUNICIPAL BUILDING COMMITTEE DATED 05/06/03

APPROVED AS PER SECTION 17:27-2.1 OF THE NEWARK BUILDING CODE, N.J.A.C. 17:27, AND THE INTERNATIONAL BUILDING CODE, 2003 EDITION, AS AMENDED.

CONSTRUCTION FOR BRACKLE WOODS BREEDING IN BACH GARDENS PARTICULARLY THE BATHS, CREEP RECEPTACLES, ETC. UNLESS A WATER.

Structural drawings and specifications submitted to the Building Department for review and approval shall be in accordance with the Newark Building Code, N.J.A.C. 17:27, and the International Building Code, 2003 Edition, as amended.

Plans for water connections shall be submitted to the Building Department for review and approval. The Building Department reserves the right to require additional information or to refuse to issue a permit if the drawings and specifications do not conform to the Newark Building Code, N.J.A.C. 17:27, and the International Building Code, 2003 Edition, as amended.

The Building Department reserves the right to require additional information or to refuse to issue a permit if the drawings and specifications do not conform to the Newark Building Code, N.J.A.C. 17:27, and the International Building Code, 2003 Edition, as amended.

